



WORLD
MONUMENTS
FUND BRITAIN

monumentum
Autumn 2010

Raising the Roof

Stowe's large library reclaims its golden glory

Project news: from Sheerness to Winchester

Plus: Winter lecture: Simon Jenkins on the true value of our Great Houses



Message from the Chief Executive

Each summer's diaspora allows us pause, to plan for the winter and to take stock of recent achievements at WMF-partnered sites. This year, there's been much to reflect on, in the midst of a spate of completions which has realised much of our work over the last few years. This issue highlights the range of very different audiences we work with and the benefits we create.

The St Paul's 'Oculus' project has now opened up the crypt level of this iconic cathedral to a new audience with amazing 270-degree film technology that informs and orientates. This achieved public-spirited and educational objectives that minimise impact on the building, a cornerstone of the WMF/ Amex Partners in Preservation for Sustainable Tourism initiative.

At Stowe House the Large Library has been redressed in its eighteenth-century gilded livery, which will be sure to delight visitors. We share the vision for Stowe to become a great cultural resource, and so this edition explains some of the work we are doing toward creating opportunities at this beautiful site, well beyond our role as a funding partner.

Meanwhile, Strawberry Hill House is racing towards a spectacular completion, with much to report on in the Spring 2011 edition after its public opening on 2nd October.

Whilst all this work progressed on-site in the summer months, I have had the privilege to present a television series that I hope will help to cultivate a wider interest and care of historic British architecture, 'Climbing Great Buildings' on BBC2.

Spending time with fellow enthusiasts of our cause is essential, and we are delighted to present the temptation of the latest package of Symm-sponsored public lectures and events which will extend into 2011.

For those of you who are already committed members and supporters, I'd like to thank you on behalf of our hard-working staff, for your patience and enthusiastic responses to our work for great buildings in need. The recent appeal for Stowe's Music Room met with a wonderful, generous response. And we look forward to sharing the results with you.

Jonathan Foyle
jonathan@wmf.org.uk



Sir Donald Insall: Our Congratulations

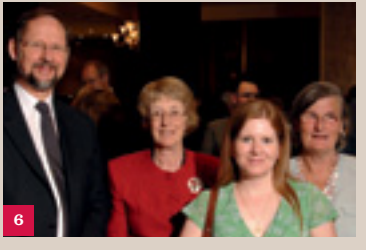
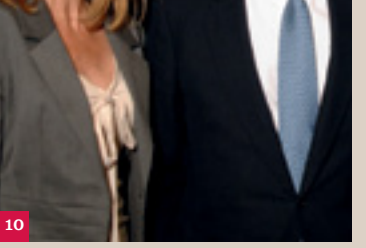
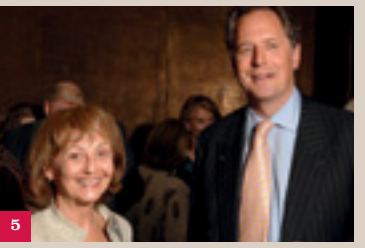
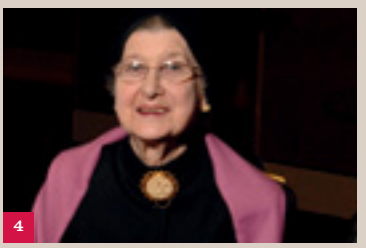
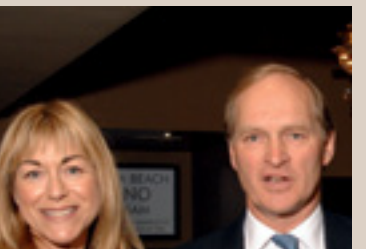
WMF-Britain would like to congratulate Sir Donald Insall on his Knighthood for services to cultural heritage. For many years we have been extremely grateful to have had Sir Donald's invaluable advice and guidance through our Architectural Advisory Committee in which he continues to play a very active role. Over a long and distinguished career Sir Donald has created one of the country's most respected architectural conservation practices, Donald Insall Associates, and has been an inspiration to many people entering the field of building conservation. Donald Insall Associates has won as many as 140 conservation awards, including 13 Europa Nostra awards (the most of any single organisation), and has contributed significantly to the international field through organisations such as ICCROM and WMF.



Jonathan Foyle Broadcasts with Buildings

During July and August, I had the privilege to film at a number of WMF sites for BBC broadcasts. BBC4's 'People's Palaces: The Golden Age of Civic Architecture' set the WMF Wilson Challenge co-funded St George's Hall Liverpool centre stage in the nineteenth-century development of great classical civic buildings in the north of England. For BBC2 I scaled a thousand year span of British architecture in 'Climbing Great Buildings', broadcast from 6 September on BBC2, which included abseiling 230 feet from the inner dome – the literal oculus – of St Paul's, the focus of \$500,000 of Amex/WMF Partners in preservation funding. My hope for this occasionally terrifying venture is that it will encourage many amongst the one million viewers to develop a closer interest in British architecture, and perhaps even join us to embark upon the spirit of philanthropic support that so many of our vulnerable works of architecture rely upon.

On 9 December I will be sharing my experiences of climbing these great buildings. Find out more on page 11.



- 1 Aidan Mortimer, Chief Executive of Symm with wife Laura Mortimer
- 2 Julia Harwood, Peter Stormonth Darling, Lady Jadranka Beresford-Peirce and John Fenwick
- 3 Cathy Giangrande (WMFB) and HRH Prince Michael of Kent
- 4 Patricia Drummond
- 5 Ewa Manias (WMFB) and Anthony Wallersteiner, Headmaster of Stowe School
- 6 Michael Snodin, Carole Patey with Diana Beattie and Tara Draper-Stumm from the Heritage of London Trust
- 7 Colin Dudgeon, Director of the Campaign for Stowe (Stowe School), William Loschert and Michelle Ansett
- 8 David Starkey with Tim Wilson, Mat Burt from Heritage Arts and Jonathan Foyle (WMFB)
- 9 Catherine Porteous, John Julius Norwich and Mollie Norwich
- 10 Judith West from Radisson Edwardian with WMFB Chairman, James Hervey-Bathurst
- 11 Lucy Hervey-Bathurst, Melanie Gibson, Piers Gibson and David Macmillan

The decision to bring back WMF Britain's annual Summer Party proved to be a popular one, as more than 100 guests flocked to Radisson Edwardian's May Fair Hotel for an evening to reflect on and celebrate the year's achievements. Our marvellous Chairman Emeritus, John Julius Norwich led proceedings with his usual wit and exuberance whilst St George's Bloomsbury's ensemble in residence, *Orsino*, treated us to a recital of early twentieth-century chamber music. Our Patron, HRH Prince Michael of Kent was also in attendance and mingled with our wide spectrum of guests, who ranged from financiers to the famous.

We would like to thank The Radisson Edwardian Group, owners of the May Fair Hotel and From Vineyards Direct for their kind support and sponsorship.

World Monuments Fund Britain Ltd
2 Grosvenor Gardens
London, SW1W 0DH
Telephone: +44 (0)20 7730 5344
Fax: +44 (0)20 7730 5355
Email: enquiries@wmf.org.uk
Website: www.wmf.org.uk
Charity number: 1126578
Registered company number: 6730565

Chairman: Mr James Hervey-Bathurst
Chairman Emeritus: The Viscount Norwich
Chief Executive: Dr Jonathan Foyle
Trustees: Ms Linda Bennett, Mrs Charles Brocklebank, Dr Lois de Menil, Dame Vivien Duffield, Dr Peter Frankopan, The Hon. Piers Gibson, Dr Amin Jaffer, Mrs Mortimer Sackler, Mr James Sherwood, Dr Christopher Tadgell, Mr Pierre Valentin, Mr Peter Stormonth Darling

Designed and produced by:
Cultureshock Media, www.cultureshockmedia.co.uk

Cover image:
Stowe's newly restored and gilded Library ceiling

Photo credits:
Cover © Richard Holttum/WMF
Page 3 © Richard Holttum/WMF
Page 4-5 © Richard Holttum/WMF
Page 6 Image courtesy of Kidscape
Page 7 Trainees © Richard Holttum/WMF
Page 8 Images courtesy of Winchester Cathedral
Page 9 © Edie Scott/WMF
Page 11 Strawberry Hill image courtesy of The Lewis Walpole Library Yale University

World Party!

Some of WMF's most influential supporters strutted their stuff at this year's revived Summer Party



FromVineyardsDirect.com

The Gold Standard

The refurbishment of Stowe's library has included gilding and other restoration work of the highest quality

At World Monuments Fund, we believe that the restoration or repair of a building is a worthy charitable act only if it enhances its usefulness to society. So we are committed to broadening opportunities for public access and participation through each of our partnerships.

Stowe is an excellent example of a 'useful' site. As our work progresses in repairing the house and conserving and restoring its interiors, such as the Large Library, we never lose sight of who we are doing it for. WMF is uniquely positioned to forge national and international partnerships for the site. Jonathan Foyle reports on recent developments.

The Large Library

Stowe's Large Library, it transpired, was not originally one room but two when built in the middle of the eighteenth century; it was united, furnished and gilded and stocked as a library during the 1790s in anticipation of a visit from George III, whose fondness for books is today manifested at the heart of the British Library. But the king never arrived at Stowe, and the fortunes of the Temple-Grenville family waned in the coming decades, leaving the library without furniture, its great ceiling beneath layers of white emulsion paint, the plasterwork failing.

Two hundred years on, in March 2010, under the partnership of the Stowe House Preservation Trust, Stowe School and World Monuments Fund, a panel convened at Sir John Soane's Museum to discuss the evidence for the original decorative scheme upon which the ceiling's restoration depended. Carefulness in the discussion and recording of decisions was vital because it would be the very last time to share forensic information. The ceiling's paint was stripped in order to fully repair and replace the cracked and failed plasterwork, over which an entire oak-trussed roof had just been rebuilt to replace a leaking and sagging twentieth-century mono-pitch.

The talented historian Michael Bevington, Stowe's Classics Master, presented excellent documentary and visual evidence for the development and usage of the room. Paint analyst Patrick Baty had taken over 600 samples of the paint and gilt finishes; Cliveden Conservation brought observations made during the stripping process whilst experts in the field of decorative history

helped guide the process. The result was a reasoned and clear understanding of the reinstatement of the decorative finish.

The gilding process was time-consuming but it has revolutionised the impression of the space, which can be returned to its rightful place amongst great Georgian interiors. And the work is not yet finished. The original 1790s gilding was applied with the expectation of being highlighted by sources and levels of illumination that have since disappeared. In July, our Stowe Scholar Laurel Peterson found an inventory of 1839 amongst the Stowe archives in the Huntington Library, California, which describes: "Three ormolu Chandeliers and glass Lustres, with Chains from Ceiling." In the quest for authenticity, we have arrived at gold-upon-gold, a library fit for King Midas, if not George III. The library is open to regular public view from next year.

1. A detail of the Library ceiling's fine plasterwork
2. The netting that protected readers from falling plaster before work commenced
3. The restored ceiling



Kidscape in the Landscape

In 2008, the children’s charity Kidscape found that 79% of severely bullied children gained the self-confidence to avoid antagonism after one of their ZAP courses. The charity’s Deputy Director Peter Bradley, welcomed a partnership with WMF and Stowe School for residential ZAP courses at a site laden with both pacific beauty and fine school facilities. A report on the first weekend course was written by **Max Sanderson**, a pupil at Stowe.



Kidscape teenagers and stoics get to know each other whilst the restoration of the house continues

On Friday 18th June, ten Stoics were gathered in the Marble Hall awaiting the arrival of the Kidscape teenagers. We had been told their names and some of the things that they had been through in the past. We were all nervous and anxious. On Saturday we had a ZAP session. This was probably the hardest part for me. We talked about bullying and what the Stoics and buddies had experienced. Hearing all of the buddies’ stories was very emotional for me and lots of the other Stoics. It really hit home why we were doing this and made us focus. After that it was time for the vocal workshop, one of the events that had attracted

the most interest. We arrived and were greeted by Simon Dearsley [Stowe’s Music Master]. We sang the poem ‘The Tyger’ by William Blake together, and were then told that we each individually had to stand up and sing in front of 25 people. Looking around at everyone’s faces I thought that nobody would go through with it. However, we all gave it a go. At the end of the exercise I realised that it had not been about who had the best singing voice, but about having the confidence to stand up in front of a group of people and sing. This alone had increased my confidence tenfold and everyone around me was attesting to that fact as well. Next we had an amazing tour from Jonathan Foyle,

which was much appreciated by the buddies – who had been dying to look around the grounds all day. Then we had English and Drama workshops which were very exciting and enjoyable for all involved. On the last day we had a walk with the beagles, which was a highlight for the buddies and for most of the Stoics too! After a closing session with the parents and Peter, it was time to say goodbye. In two days we had so much fun, not only through all the activities but also through bonding with our friends. It was very hard to say goodbye but we made sure we had exchanged contact details so that we could keep the friendships we had made over the weekend.”

A Scholar’s Story

Thorough academic research is essential to understand a building before restoration work is undertaken whilst publishing new discoveries is a natural conclusion.. In 2010 we negotiated the ‘Stowe Scholarship’, co-funded by Yale Center for British Art and The Paul Mellon Centre in London. **Laurel Peterson**, a PhD student at Yale University, was the chosen scholar for 2010. She spent a month in England and a month studying the Stowe archives in Los Angeles with archivist Cathy Fisher. Laurel writes below.



Laurel Peterson at Stowe

On August 15th, 1848, a forty-day sale of the contents of Stowe House commenced. Since the early eighteenth century, Stowe had been recognized as one of the grandest country houses in England. The home of a politically prominent family, it had played host to such figures as Louis XVIII and Queen Victoria. However, the second Duke of Buckingham and Chandos, £1.1 million in debt, was forced to sell the vast majority of Stowe’s contents, from ancient Roman sculptures and paintings by Rembrandt and Reynolds, to eleventh-century illuminated manuscripts and Sèvres porcelain. Two days were devoted to selling the contents of the wine cellar alone, the sale of which realised close to £1400. The list of objects in the sale catalogue from this monumental event tells a story of Stowe and of the passions and interests of the family who lived there.

This summer, in conjunction with the restoration in progress at Stowe House, and supported by a fellowship sponsored by the World Monuments Fund, the Yale Center for British Art, and the Paul Mellon Centre for Studies in British Art, I spent three months seeking the stories that Stowe has to tell. After the sale in 1848 (and subsequent auction of the entire estate in 1921) the contents of the house were scattered worldwide. My research took me from studying William Kent chimney designs in New Haven, CT, to examining an ornate astronomical clock at the Wallace Collection in London. I spent two weeks living at Stowe, which has been a public school since

1923. Experiences such as eating meals in the state dining room-turned-canteen and listening to a violinist in the music room gave me a taste of what life might have been like during the house’s heyday. Discussions with those who have long studied Stowe illuminated its quirks and treasures. The heart of my research lay far away from Buckinghamshire, at the Huntington Library in San Marino, CA. Along with auctioning off their furniture and paintings, the family also sold their archives in the 1920s; Henry Huntington bought the estimated 350,000 documents, paying by the yard. Stowe came to life as I delved into boxes of receipts, read family correspondence, or paged through an 1810 engagement diary. A menu book detailed the food prepared by the French chef, a tailor’s receipt listed the clothes that were worn, and a sketch of members of the family performing a play offered a vision of daily life. Every object, every account book, and every room provides further knowledge of Stowe. As restoration of the house continues, my research will contribute to the development of new visitor interpretation. By bringing the pieces together we can discover not only the stories of this magnificent house, but also those of the long eighteenth century.”

Stowe Masons

The WMF’s new heritage skills training programme has seen young stonemasons gaining experience at Stowe

This summer, as work progressed on the repairing the fine masonry of Stowe House, David Gundry, WMF Britain’s Project Director, was delighted to launch a heritage skills training programme, generously supported by The Paul Mellon Estate. Held with The Building Crafts College, one of the UK’s leading construction skills schools, this training programme met with the support of the main contractor, Linford Bridgeman and will see trainee stonemasons gaining valuable on-site experience towards their National Vocational Qualification level III. At Stowe four trainee stonemasons, Hannah Baars, Daniel Davidson, David Pickering and Yuko Motoi, who have already achieved their Advanced Craft Diplomas will gain three weeks ‘banker’ experience in the Linford’s workshop followed by three weeks on-site ‘fixing’ experience at Stowe. Hannah Baars commented “to be given the opportunity to work on such a prestigious, large-scale project alongside experienced craftspeople is invaluable. It will be enormously beneficial for me to be able to build on the skills I’ve learnt during the last year in a professional environment.”

David Pickering and Hannah Baars working on the East Pavilion at Stowe House



Winchester Cathedral

WMF Britain commences a new project at Winchester Cathedral to restore glorious carving from the seventeenth-century High Altar canopy.

The seventeenth and eighteenth-century High Altar at the Cathedral consisted of a Laudian (Anglican High Church of Charles I) timber canopy surmounted with later ensemble of carved drapery, cartouche and naturalistic festoons in the style of English wood carver Grinling Gibbons. A James Cave watercolour dated 1801 shows this ensemble in position. Since then, as a result of changes in liturgical practice and fashions, the canopy arrangement has been disassembled and scattered to different areas of the cathedral with the carved drapery and festoons hanging, largely unnoticed and in a worsening condition, below the south transept crossing arch.

WMF Britain will support the conservation and re-presentation of the altar carving so that it can once again contribute fully to the story of the cathedral during the seventeenth and eighteenth centuries. This involves discussions with the Cathedral Chapter and Fabric Advisory Committee to agree an approach to the work, cleaning and consolidation of the object, recarving of some lost elements

The resituated altar frontal of c.1700 in the south transept of Winchester Cathedral, awaiting repair



to improve the coherence of the piece and improvements to its positioning and interpretation within the Cathedral, so that visitors can enjoy it once more.

David Esterly, a US-based expert in the restoration of woodcarving of this period, comments that "the composition embodies the tensions and triumphs of English carving during this period, with its nod towards the dominant Gibbons style but its stubborn grip on the older, pre-Gibbons tradition. The work has great educational value, encapsulating as it does the history of carved decoration in Britain in the second half of the seventeenth century."

The work will feature in our 2011 Mellon Lecture (details to follow), presented by David Esterly. We will have the opportunity to use the Cathedral as a venue for the lecture, enabling the public to view the object at close hand before it is returned to its elevated position.

This project is generously supported by The Gilbert Butler Foundation and The Paul Mellon Estate.

Winchester Cathedral from the north-west



Shobdon Parish Church

This Herefordshire church needs a financial boost to restore its Rococo Gothick glories



WMF Britain's Chair James Hervey-Bathurst with Simon Arbuthnott, Chairman of the Shobdon Church Preservation Trust on the roof of the Church

Although elements of its twelfth-century origins survive, this small country parish church was remodelled in the 1750s to become the most complete surviving Rococo Gothick interior in the UK, including all the furniture, and is architecturally one of the country's most important churches. It is closely associated with Horace Walpole's *Committee of Taste* because Sir Richard Bateman, a member who was intimately involved with the construction of Strawberry Hill during the same period, is thought to be its creator.

Unfortunately, Shobdon is suffering from the failure of fourteenth-century timbers which were recycled in the mid-eighteenth century. These issues were the reasons for its successful nomination to the 2010 Watch and, subsequently, we can report that English Heritage has offered a grant of £700,000 towards the repair programme.

The superlative interior of the church has not been subject to any detailed physical analysis or documentary research to inform its future interpretation or possible

restoration. We hope to enable this research so that a full understanding of what the church looked like at the time of its conversion is revealed, contributing to the public's enjoyment of the building.

This project is generously supported by The Paul Mellon Estate.

The pulpit within Shobdon's remarkable, intact interior



Sheerness Dockyard

A unique forgotten landscape of maritime heritage risks being neglected further unless WMF Britain and SAVE Britain's Heritage can create a compelling vision for its future use.

In recent months SAVE, WMF Britain and local community groups have vocally objected to a proposed development at Sheerness's Regency Terrace. This would have seen a new gateway made through the Grade II listed dockyard wall as well as three blocks of flats constructed on the gardens of Dockyard House and Regency Terrace which are both Grade II* listed and are significant elements of a coherent landscape. We are pleased to report that this effort has succeeded as the application was unanimously rejected by Swale Planning Committee members.

Now that the immediate threat of inappropriate development has been significantly reduced, SAVE and WMF Britain have turned their attention to the Grade II* Dockyard Church, neglected by its current owner who also wishes to sub-divide the building for conversion into flats.

Along with SAVE, we intend to author a report which will include a visualised proposal for the re-use of the Church as a heritage centre, as well as a location for the unique dockyard "model" which is currently being stored by English Heritage. More generally, the report will highlight and present options for a holistic approach to the historic areas of the dockyard. The site offers much potential, including a national centre of excellence in ship restoration, providing much-needed work and educational opportunities, and the return of the Boat Store to its original use. The report will consider the various opportunities whilst taking into consideration the management options for the long-term care of historic buildings within the dockyard.

This project is generously supported by The Paul Mellon Estate.



WMF Britain staff and trustees inspect the Boat Store

The model of the now-burned dockyard church



Christmas Cards

Have you considered adding World Monuments Fund Britain to your Will?

Winter Lecture & Study Day Series 2010

WMF Britain Christmas cards are on sale now. Each pack contains 10 cards and 2 designs. The first card features an image of the stunning chandelier in St George's Bloomsbury. Installed last year, this seventeenth-century Dutch made piece was previously hung in the foyer of the Victoria and Albert Museum. The second features a detail of the William Kent ceiling in the North Hall at Stowe; WMF's flagship restoration project.

Packs cost £6 (10 cards and envelopes) + £2 P&P for orders up to £18 and £5 P&P for orders over £18. To place an order please call 020 7730 5344 with your credit/debit card ready or send a cheque payable to World Monuments Fund Britain Ltd. to WMFB, 2 Grosvenor Gardens, London SW1W 0DH. Please reference 'WMFB Christmas Cards' and include the delivery address. Packs will be despatched within a few days of receiving your payment. The cards will be on sale at all of our Winter events.

All profits from the sale of the cards will go towards the activities of WMF Britain.

We rely on support from generous individuals to help us preserve beautiful historic structures at home and abroad for future generations. Without this support we would be less able to realise our ambition to protect historically important sites across the globe. By including World Monuments Fund Britain in your Will you can help us preserve many more wonderful buildings for years to come.

WMF Britain was founded in 1995 as a result of a major bequest from one of America's most enlightened benefactors, Paul Mellon (1907-1999). He saw the great benefits of preserving the architectural heritage of Great Britain and the role of WMF Britain in using its skills to make it happen. Since then we have accomplished a great deal, but there is still much to do.

A gift in your Will to WMF Britain would give loved ones the pleasure of knowing that you are giving to a cause in which you believe, whilst creating a lasting memoriam which reflects your passions. It also allows you to pledge your support without experiencing any immediate financial burden.

Our legacy pledgers are very important to us and to convey our thanks we invite them to learn more about our organisation and current projects through invitations to special events and visits. On receiving a bequest, appropriate acknowledgements will be made, but if you have any specific wishes we will do our utmost to honour them.

If you are considering making a bequest to World Monuments Fund Britain, our Finance Director or those in development would be pleased to discuss this with you. Please email enquiries@wmf.org.uk, call +44 (0) 20 7730 5344 or write to WMFB, 2 Grosvenor Gardens, London SW1W 0DH to request more information.

Thank you for taking the time to consider leaving a legacy to WMF Britain.



“

I wrote a new Will a few months ago, leaving a modest bequest to WMFB. How about doing the same? We'd be so grateful; and the money, we can assure you, would be well spent!”

John Julius Norwich, Chairman Emeritus, World Monuments Fund Britain.



Sir Simon Jenkins The Great House in the twenty-first century

The issue is a pressing one. Over the last two centuries, Britain's historic houses have faced waves of threats. Those which survived have largely been taken into the guardianship of charities as museums, or have found alternative uses such as Stowe House, WMF Britain's major project in tandem with the National Trust's restoration of the gardens. Sir Simon, as Chairman of the National Trust, explores the circumstances, values and opportunities of great houses in the twenty-first century.

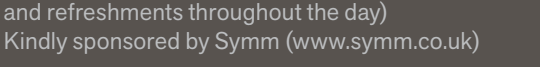
Tuesday 26 October, 7pm
Royal Geographical Society, Kensington, London
WMFB members £10/non-members £15
Kindly sponsored by Symm (www.symm.co.uk)



Strawberry Hill revealed Study Day to review the restoration

Intended as Horace Walpole's summer retreat, Strawberry Hill became much more significant. Its interiors saw the early adoption of detail from Gothic buildings, providing a dramatic home to Walpole's eclectic collection of antiquities. Following years of neglect, in 2002 Strawberry Hill was placed on WMF's Watch list, and received \$1m of WMF Wilson Challenge funding. The Strawberry Hill Trust has now completed the enormous task of restoring the house, and this study day represents a very special review of the achievement.

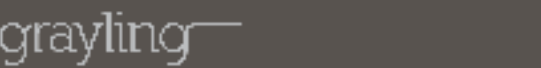
Thursday 4 November, Strawberry Hill, Twickenham
WMFB members £70/Non-members £80
(Includes transport from central London, if required and refreshments throughout the day)
Kindly sponsored by Symm (www.symm.co.uk)



Climbing Great Buildings The View with Jonathan Foyle

'Climbing Great Buildings' is a 15-part BBC2 / BBC4 series in which Jonathan Foyle, CEO of World Monuments Fund Britain, explores a thousand-year span of British architecture through climbing, with the help of seven-times British Champion, Lucy Creamer. At the heart of the series is a major WMF project: St Paul's Cathedral. In this talk, Jonathan shares the experiences of gaining unique access to the hidden wonders of some of Britain's most exceptional buildings.

Thursday 9 December, 7pm
Royal Geographical Society, Kensington, London
WMFB members £10/non-members £15
Kindly sponsored by Grayling (www.grayling.com)



To book an event please call 020 7730 5344 or book online at www.wmf.org.uk/activities



Dangerous Liaisons—Forbidden Love

Featuring Spirituoso and guests (WMF co-host with the Handel House Museum and St George's Bloomsbury)

Handel House Museum's ensemble-in-Residence, Spirituoso will take the audience on a moving journey through elements of art in eighteenth-century Europe, exploring contrasting passions. Love, lust, deception, grief and joy are enacted through music and movement, uniting two characters in a forbidden love. Spirituoso will be joined by guest artists on period instruments, and baroque dancers. World Monuments Fund co-hosts and during the course of the evening we will celebrate the installation of the chandelier in the church made possible through WMF funding.

Saturday 20 November, 7pm
St Georges Church, Bloomsbury
Tickets: £9/£5 students

To book please call the Handel House Museum on 020 7399 1953 and please mention WMF



10

Please help us raise £150,000 for Stowe's Music Room

WMF Britain's current priority is to raise funds towards the restoration of Stowe's majestic Music Room

Situated between the Marble Saloon and Large Library, the Music Room has retained its original usage as a space for entertaining and concerts. The exquisite decorations on the ceiling and walls are the laborious work of Vincenzo Valdre and were completed after 1781. Their style recalls the Pompeian discoveries which had attracted the Marquess of Buckingham on his Grand Tour of 1774. They depict flowers, butterflies and birds and bring a sense of fun, with many classical figures cheerfully suspending a swag or supporting a cornice. The imposing Corinthian columns at either end of the room are the work of Domenico Bartoli and imitate Siena marble. At the north end they frame a beautiful niche depicting a scallop-shell motif with oak leaves. Every donation is matched 1:1 doubling the value of your contribution.



The Music Room, photographed by J. Mudd & co., ca. 1870

The room requires a combination of conservation, repair and specialist cleaning.

How you can help...



£25

Replaces a defective oak floorboard



£50

Funds the painting of one square metre of ceiling background between the gilding and paintings



£100

Allows for a conservator to spend 4 hours on site



£250

Funds specialist joinery repair to an overdoor



£500

Funds the conservation cleaning of a column capital and retouches its gilding



£1000

Allows for paint analysis and the investigation of joinery decorations



£2000

Funds the conservation of a Valdre-painted wall panel



£3000

Allows for the entire cornice to be conservation cleaned and repaired



£4000

Funds the conservation of the niche in the north wall

To donate to this appeal please complete the form which is located within this magazine or to discuss your donation contact Cathy Giangrande or Sarah Meaker on Tel: +44 (0) 20 7730 5344 or email cathy@wmf.org.uk / sarah@wmf.org.uk